

INNSBRUCK

A-277 CANADA Modular Homes



LUXURY and VALUE

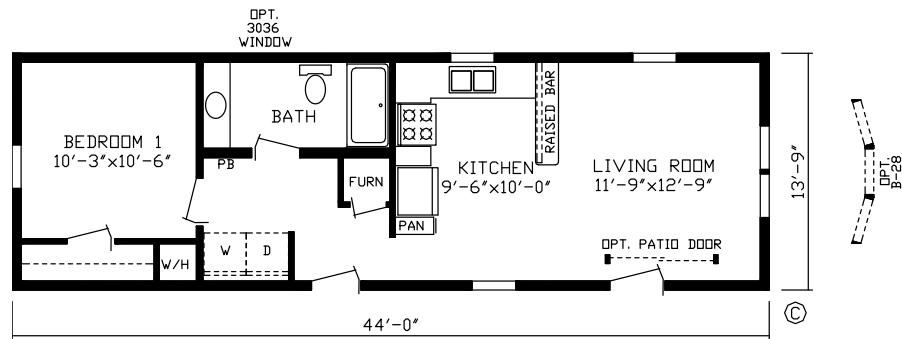
Exceed your Expectations with Fairmont Homes



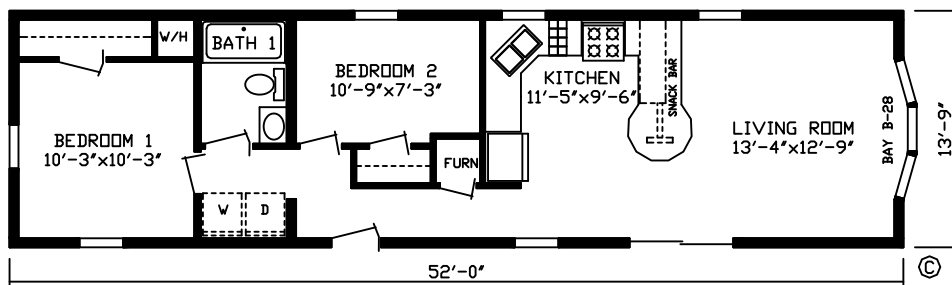
fairmonthomes.com

14 WIDES

MANCHESTER Print #147052L • 1 Br • 1 Bath • 605 Sq Ft



HURON Print #147029L • 2 Br • 1 Bath • 715 Sq Ft

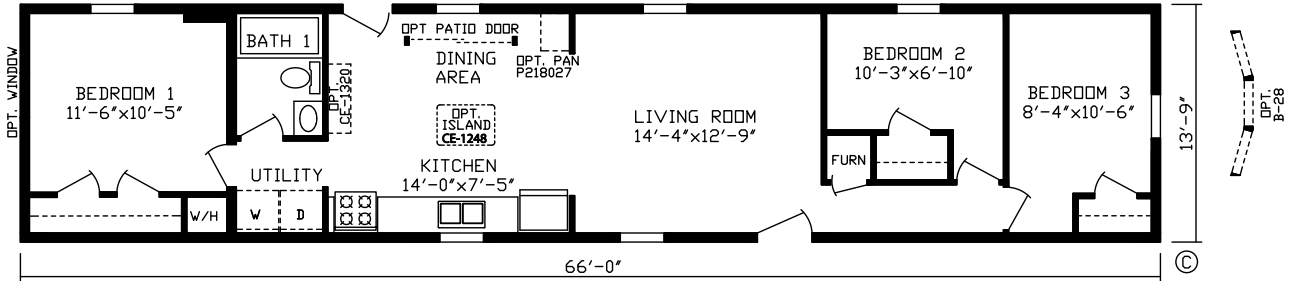


INNSBRUCK

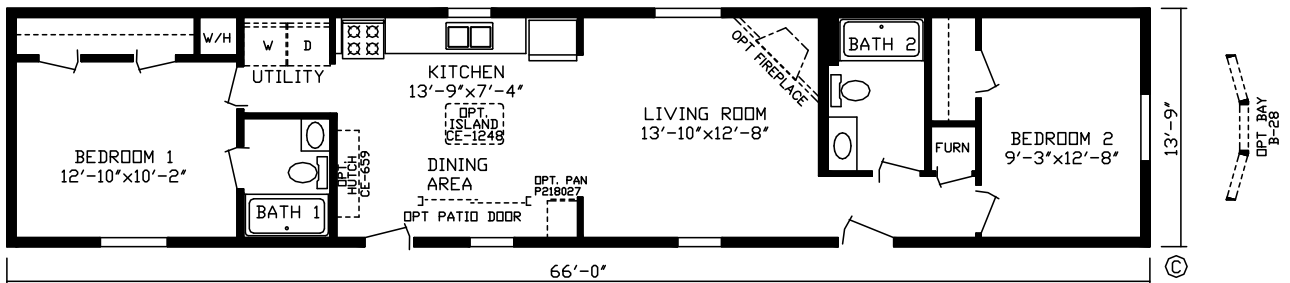
A-277 CANADA Modular Homes

14 WIDES

GLEN HAVEN Print #147001 • 3 Br • 1 Bath • 907 Sq Ft



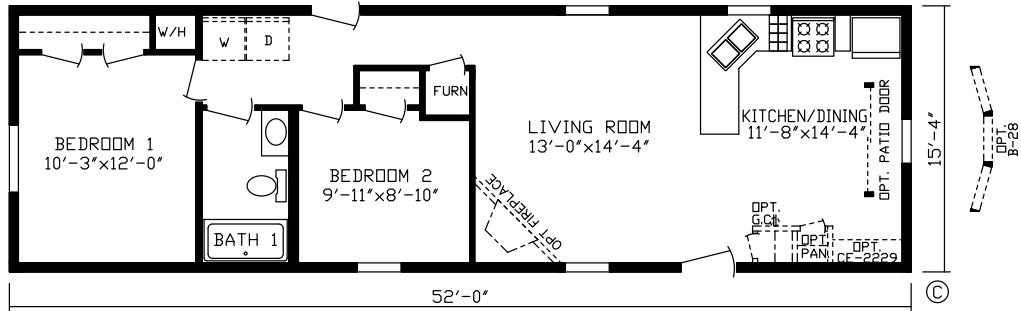
BRANT CREEK Print #147037L • 2 Br • 2 Bath • 907 Sq Ft



Renderings may differ from floor plans

16 WIDES

HERON COVE Print #147004 • 2 Br • 1 Bath • 797 Sq Ft

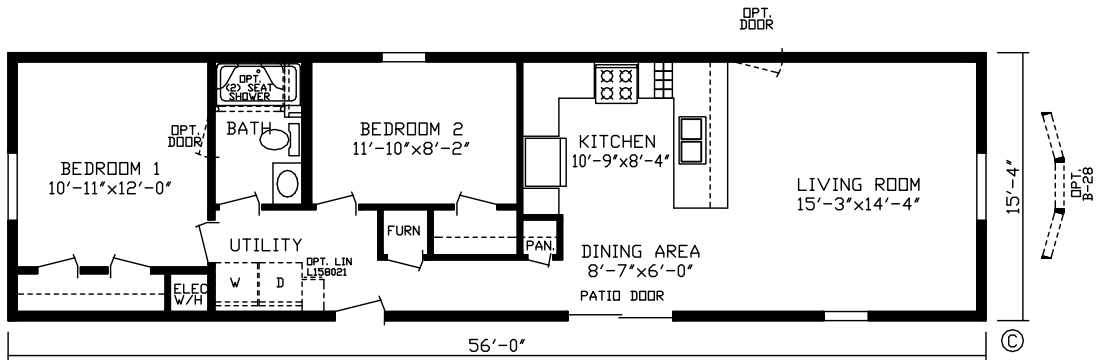


INNSBRUCK

A-277 CANADA Modular Homes

16 WIDES

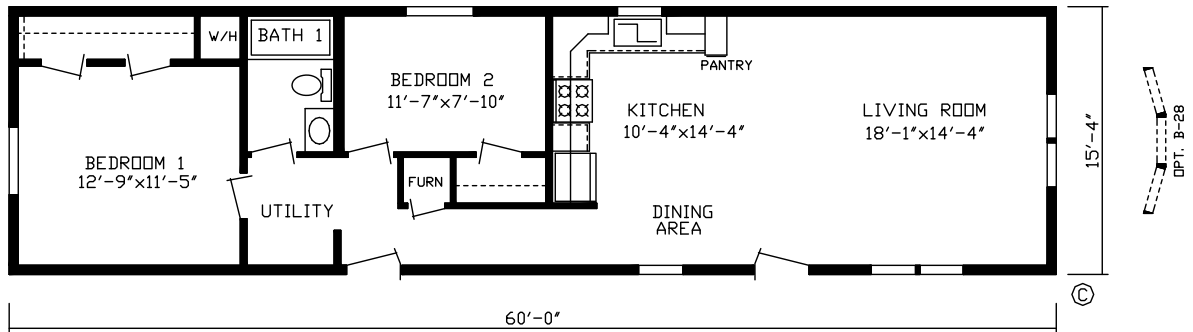
TANGLEWOOD Print #147011L • 2 Br • 1 Bath • 858 Sq Ft



Renderings may differ from floor plans

16 WIDES

STONE POINT Print #147044L • 2 Br • 1 Bath • 919 Sq Ft

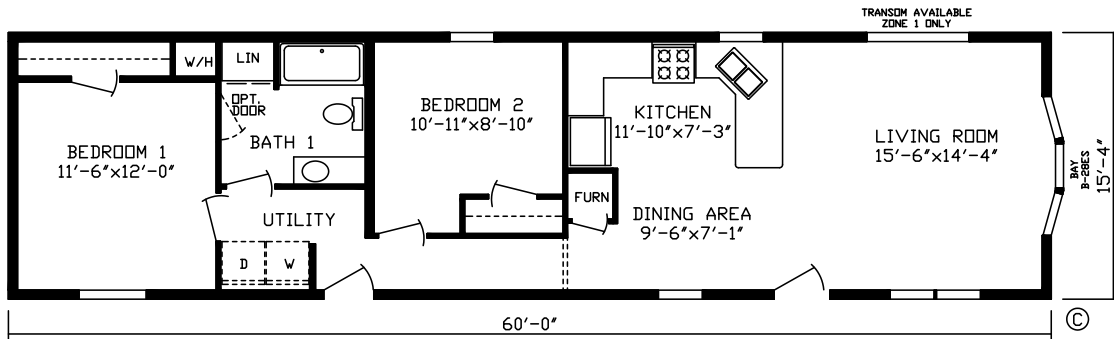


INNSBRUCK

A-277 CANADA Modular Homes

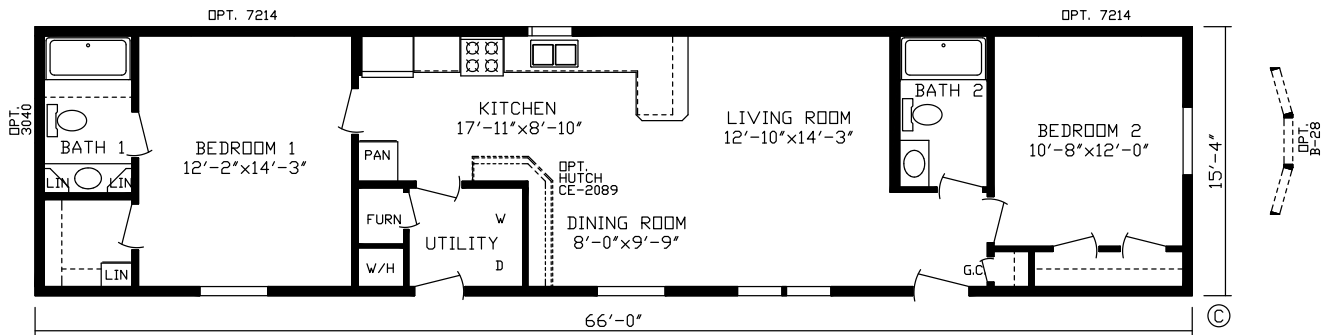
16 WIDES

OPAL Print #147049L • 2 Br • 1 Bath • 919 Sq Ft



16 WIDES

BRANDON Print #147043L • 2 Br • 2 Bath • 1,011 Sq Ft

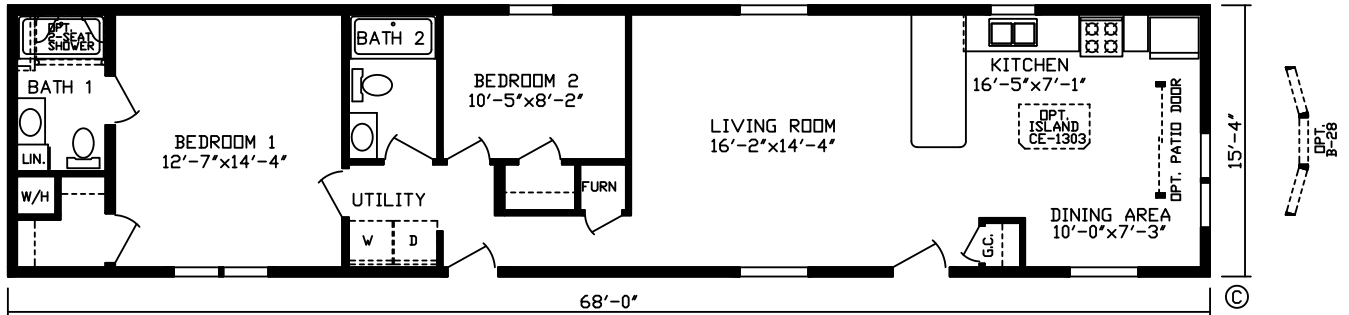


INNSBRUCK

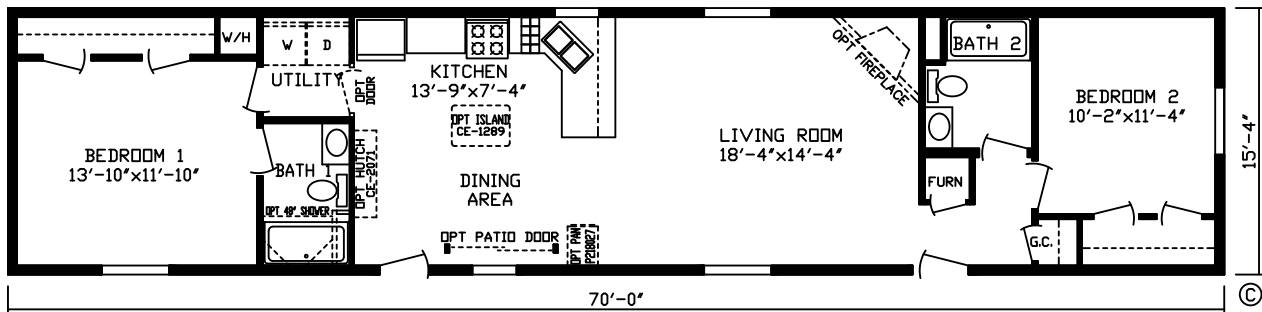
A-277 CANADA Modular Homes

16 WIDES

CYPRESS PARK Print #147022L • 2 Br • 2 Bath • 1,042 Sq Ft



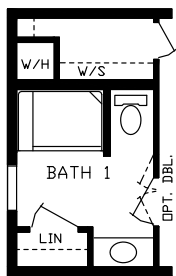
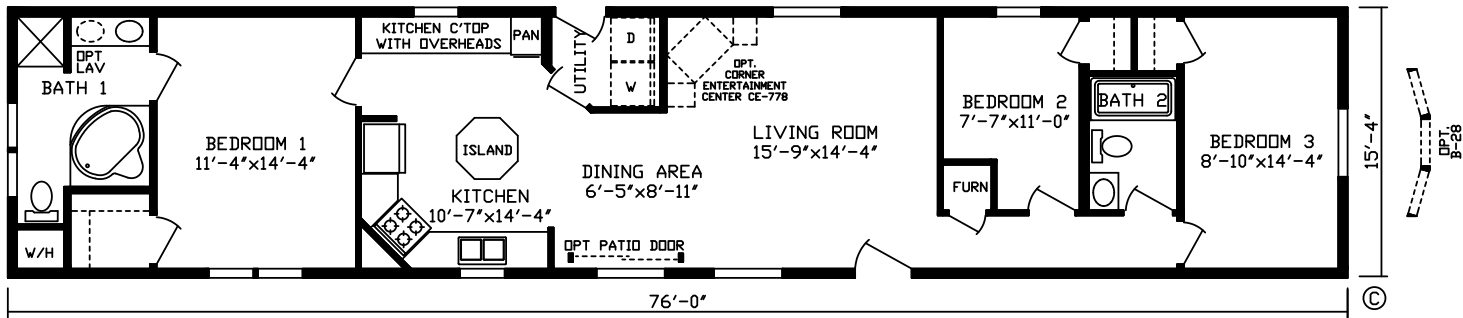
BIRMINGHAM Print #147053L • 2 Br • 2 Bath • 1,073 Sq Ft



Renderings may differ from floor plans

16 WIDES

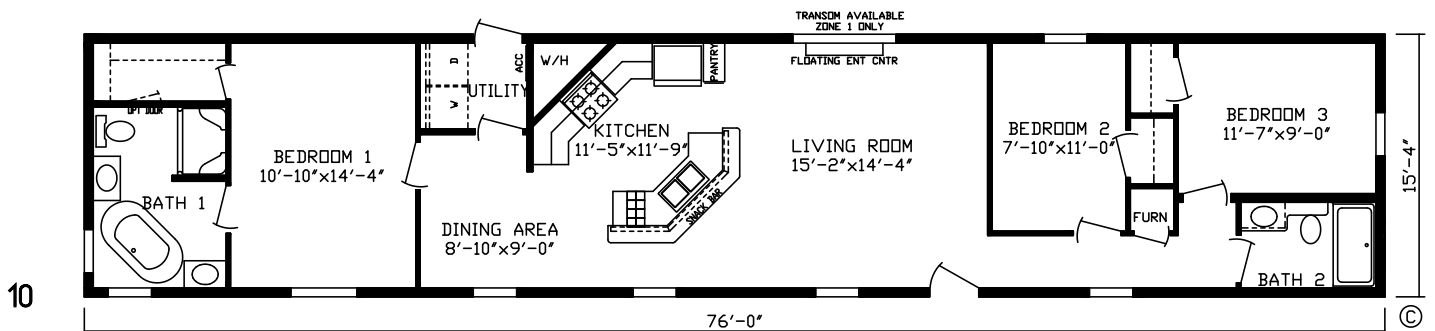
EVOQUE Print #147000 • 3 Br • 2 Bath • 1,165 Sq Ft



RO1
Opt
Bath 1



BLAKE HOUSE Print #147051 • 3 Br • 2 Bath • 1,165 Sq Ft

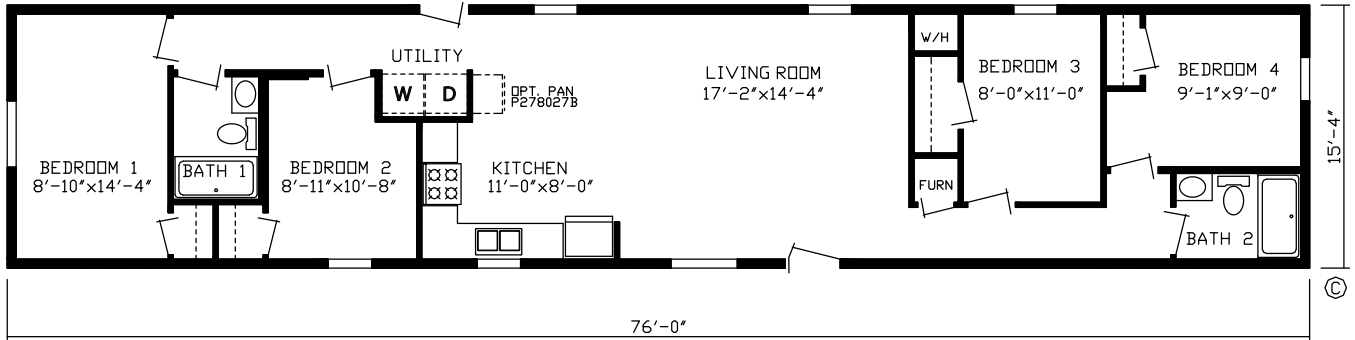


INNSBRUCK

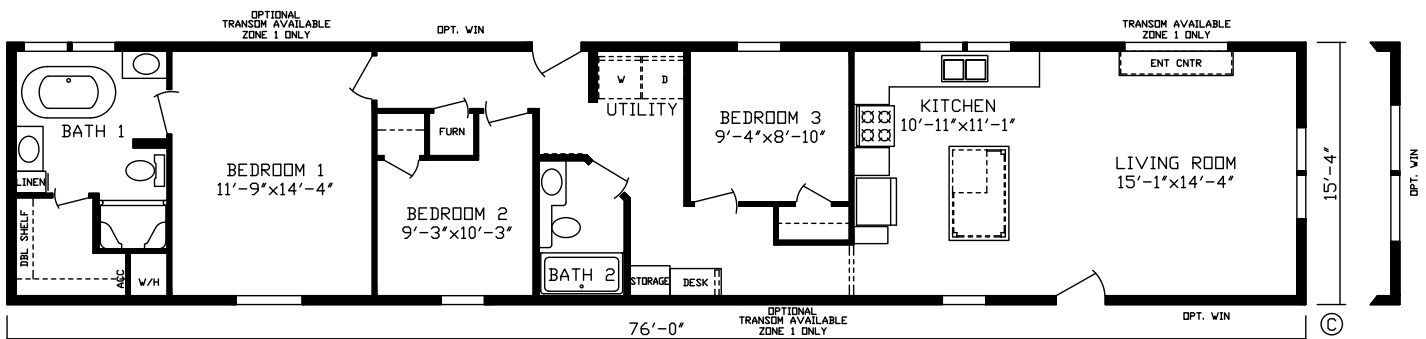
A-277 CANADA Modular Homes

16 WIDES

BRADY Print #147035 • 4 Br • 2 Bath • 1,165 Sq Ft



AUSTIN Print #147050 • 3 Br • 2 Bath • 1,165 Sq Ft



Renderings may differ from floor plans

INNSBRUCK

A-277 CANADA Modular Homes

Standard Features

Energy Savings

- Kinro® Low E Gridded Thermopane Windows
- HomeGuard™ Exterior Weather Wrap
- OSB Exterior Sheathing, Sidewalls & Endwalls
- 6 Mil Vapor Barrier At Exterior Walls
- R-50 Roof Insulation
- 2x6 Sidewalls w/R-24 Sidewall Insulation
- R-31 Floor Insulation
- Trane® 95% Plus High Efficient Furnace
- Perimeter Heat
- Zone 1 Region Specifications

Exterior & Construction

- 8' Sidewall Height w/Flat Ceilings
- 60 lb Ground Snow Load
- 2x10 Floor Joist 16 O.C.
- 19/32" OSB Tongue & Groove/Glued & Screwed 4' x 8' Floor Decking
- Shutters, Doorside & Hitchend
- 4-1/2" Dutch Lap Vinyl Siding
- Owens Corning® 25 Year Shingles
- 1/2" OSB Roof Decking
- Lauan Substrate At Exterior Walls

Floor Coverings

- Shaw® 18 Ounce Nylon Carpet
- Congoleum® Linoleum (Foyer, Kitchen, Utility, Bathrooms)
- 5 Pound Rebond Carpet Pad
- Tack Strip Carpet Installation

Electrical

- 100 Amp Breaker Box
- (2) Exterior GFI Weather Resistant Receptacle
- Humidistat Installed
- LED Can Lights Standard

Plumbing

- 50 Gallon Electric Water Heater w/Double Element
- 7" Stainless Steel Kitchen Sink
- Water Shut Off Valves At Sinks & Commodes
- Main Water Shut Off In Water Heater Compartment
- Frost Free Faucet
- Pex Water Line System
- Plumb For Washer & Dryer

Bathrooms

- 1 Piece Fiberglass Tubs
- Elongated Commodes
- Porcelain Sinks
- Mirror Above Each Bath Lav
- Cosmetic Light Above Mirror In Baths

Cabinetry

- Custom Designed Kitchens
- Shaker Rustic Shore Mortise & Tenon Cabinet Doors
- Hardwood Cabinet Stiles- Pre-Drilled & Screwed
- Adjustable Hidden Hinges
- 3-1/2" Crown Molding Above Kitchen Cabinets
- Formica Edging In Kitchen
- High Pressure Laminated Countertops & Backsplash
- Drawer Above Base Cabinets In Kitchen
- Cabinets Over Refrigerator
- Breaker Box Cover
- Dovetail Drawer

Décor

- Madison Drape Package
- 1" Mini-Blinds
- 2-1/4" Door & Window Casing
- 2-1/2" Ceiling Cove
- Brushed Nickel Hardware & Cabinet Pulls
- 1/2" Vinyl on Gypsum Walls
- Stippled Ceiling

Doors

- 38x82 White Decorator Front Door w/Storm & Deadbolt
- 34x82 White Decorator Rear Door w/ Storm & Deadbolt
- 6-Panel White Interior Doors
- Furnace Door

Appliances

- 18 CF Black Frost Free Refrigerator
- 30" Black Standard Clean Gas Range w/Shut Off
- Dishwasher - Black



2181 East Market Street • Nappanee, IN 46550 • fairmonthomes.com



FAIRMONT HOMES — Built Better with Brand Name Components



All descriptive representations of products in this brochure are believed to be accurate at the time of publication. However, due to product improvement and changes in suppliers, design and production may vary. Some optional items shown and some images depicted in this brochure show porches, garages, or breezeways that are built on site by others.

© 2021 Fairmont Homes, LLC Rev 10/2021